

Laying period



# General

Keep hens healthy

Maximum production

Efficient production

Recommendations of breeder manual for equipment

Good quality of produce

# Feeding management

Feed consumption should increase in the right way

If not a mid-night snack can be given

Start feed of different phases at right time

Calcium contents of the diet; at start of lay some bird have high requirement

Avoid fatty livers

# Light

## Windowed houses

- natural day length just before laying period starts
- Increase till 2/3 of top production is achieved
- No decrease of light
- During night minimum 40 lux at hen level
- In warm period a little bit of light in middle of night to stimulate feed consumption?



Solar panels



Batteries



Time switch



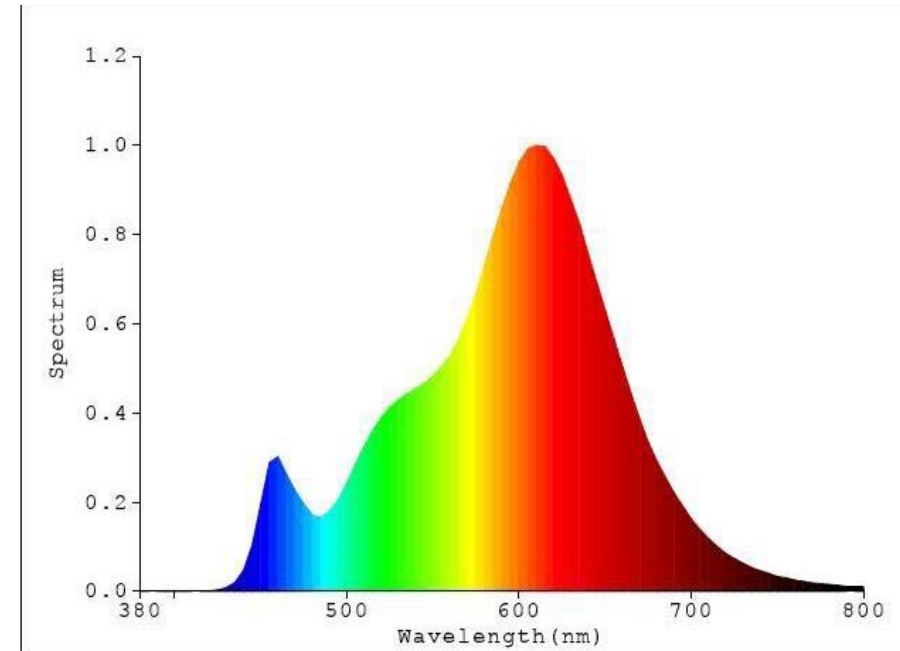
LED lamps



# Colour of the LED light

2600K - 2700K lamps

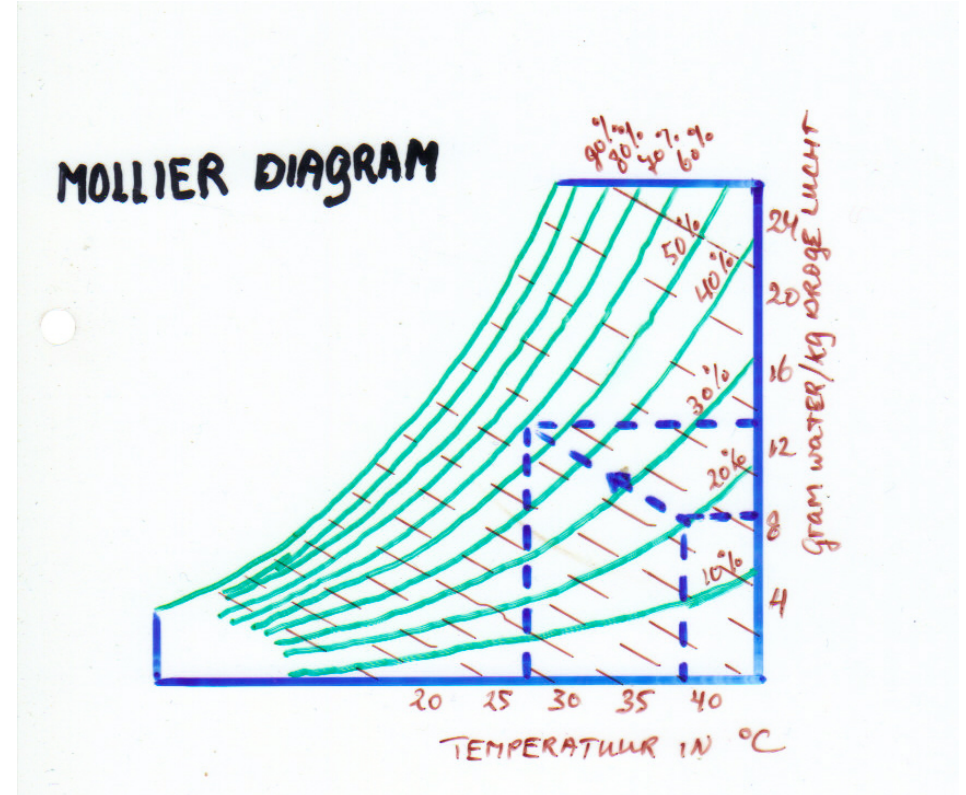
Layers need red light part of spectrum



# Climate control

## Warm periods

- water evaporation or fogging
- avoid sharp falls in temperature
- vitamin C
- fat in formula



No obstruction of air in inlets

Maintenance

Avoid areas in the hen house with no/ little air movement

If feed consumption decreases: turn light on for 1-1,5 hours in the night



# Daily work

Each day the poultry attendant has to check the following things:

- obstructions for feed/drinking equipment
- birds
  - behaviour
  - colour of eyes and comb
  - mortality
  - sound
  - manure

- Functioning of drinking system
- Registering water consumption
- Check for vermin

# Vermin control

Important in layer operations:

- egg rests
- feed rests
- manure

are feed for vermin:

- rats and mice
- flies
- bugs



# Damage caused by vermin

Possible source of diseases

Feed consumers

Agitation

# Rats and mice

- 1) Clean houses
- 2) Make a program for bait placement
- 3) Use different chemicals alternately
- 4) Check in remote parts of the house

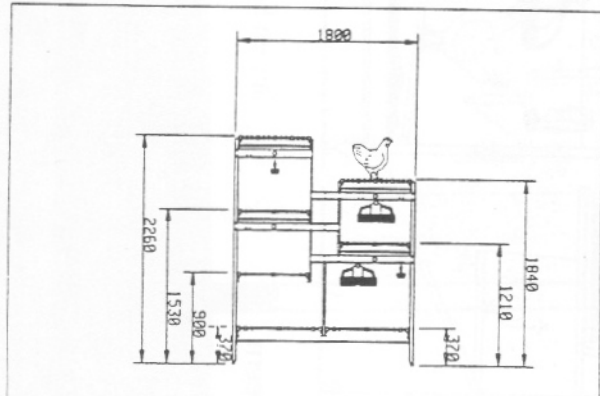
# Other bugs

Red mite

Beetles

- not harmful for hens
- can transmit diseases

# Alternative to floor: Aviary system



demonstratieproject  
 welzijnsvriendelijke huisvestingsystemen  
 Postbus 482, 6710 BL Ede, telefoon: 08380-71400, fax: 08380-24737

4

**1** Scharreiruimte  
**2** Legnesten  
**3** Rustétage  
**4** Voergoot  
**5** Drinknippels  
**6** Zitstokken  
**7** Mestbanden  
**8** Aanvliegplateau


**1** Scharreiruimte  
**2** Legnesten  
**3** Rustétage  
**4** Zitstokken  
**5** Voergoot  
**6** Drinknippels  
**7** Mestbanden

**1** Scharreiruimte  
**2** Legnesten  
**3** Rustétage  
**4** Zitstokken  
**5** Voergoot  
**6** Drinknippels  
**7** Mestbanden

**1** Scharreiruimte  
**2** Legnesten  
**3** Rustétage  
**4** Voerinstallatie  
**5** Mestbanden  
**6** Drinknippels  
**7** Mestgoot

**1** Scharreiruimte  
**2** Legnesten  
**3** Rustétage  
**4** Zitstokken  
**5** Voerinstallatie  
**6** Drinknippels  
**7** Mestbanden

Rihs-Boleg 2      Multiflooor      Natura 280  
 Étage      Volétage

 Ministerie van Landbouw, Natuurbeheer en Visserij Postbus 482, 6710 BL Ede	© 1992 Copyright IKC - Veehouderij
	Het Ministerie van Landbouw, Natuurbeheer en Visserij aanvaardt geen aansprakelijkheid voor schade van welke aard ook voortvloeiende uit het gebruik van deze gegevens.
Naam: <b>PLUIMVEESTAL</b>	
Onderdeel: <b>welzijnsvriendelijke huisvestingsystemen</b>	
Afdeling: <b>Pluimveehouderij</b>	
Schaal: <b>—</b>	Datum: <b>FEB 92</b>
Ontwerper: <b>Marcel Rietveld</b>	Blad: <b>Bladen</b>
Gew.: <b>—</b>	Formaat: <b>A3</b>
Archiefnummer: <b>92-3-05B</b>	

Thank you