

Laying period



General

Keep hens healthy

Maximum production

Efficient production

Recommendations of breeder manual for equipment

Good quality of produce

Feeding management

Feed consumption should increase in the right way

If not a mid-night snack can be given

Start feed of different phases at right time

Calcium contents of the diet; at start of lay some bird have high requirement

Avoid fatty livers

Light

Windowed houses

- natural day length just before laying period starts
- Increase till 2/3 of top production is achieved
- No decrease of light
- During night minimum 40 lux at hen level
- In warm period a little bit of light in middle of night to stimulate feed consumption?



Solar panels



Batteries



Time switch



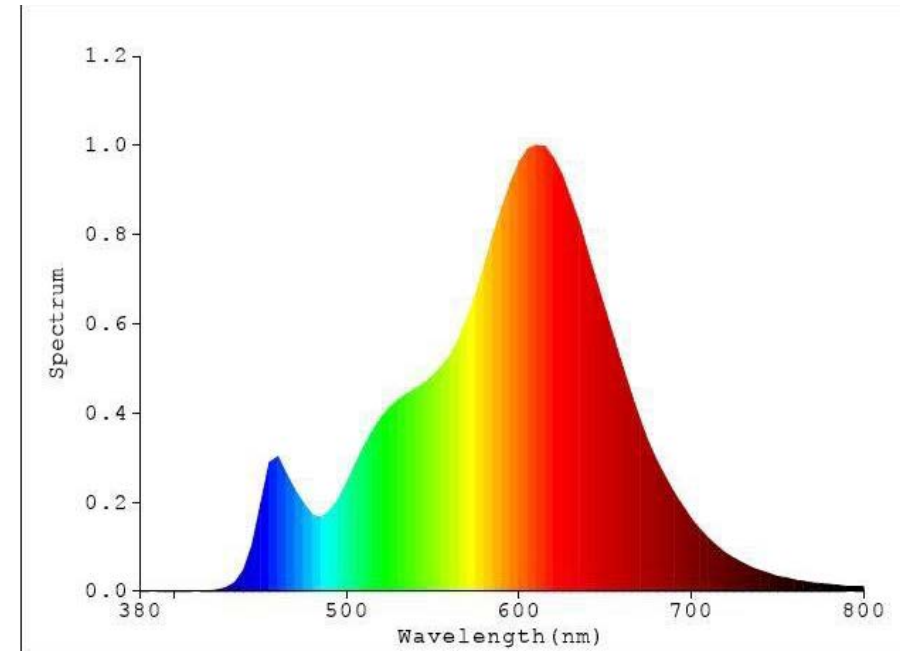
LED lamps



Colour of the LED light

2600K - 2700K lamps

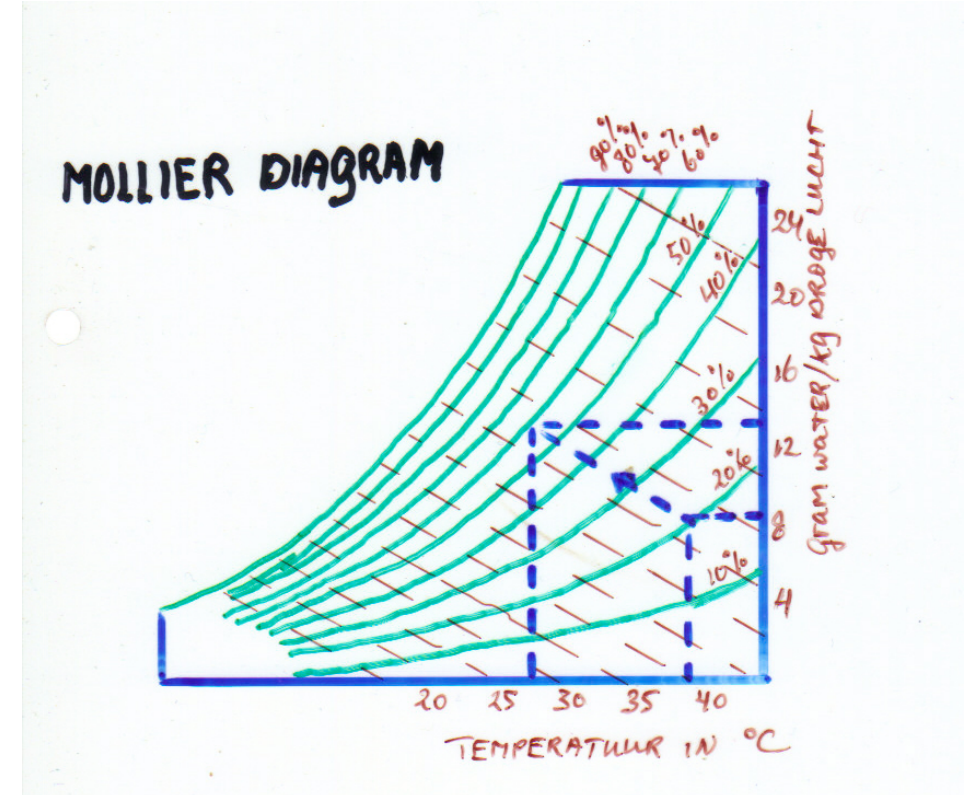
Layers need red light part of spectrum



Climate control

Warm periods

- water evaporation or fogging
- avoid sharp falls in temperature
- vitamin C
- fat in formula



No obstruction of air in inlets

Maintenance

Avoid areas in the hen house with no/ little air movement

If feed consumption decreases: turn light on for 1-1,5 hours in the night

Daily work

Each day the poultry attendant has to check the following things:

- obstructions for feed/drinking equipment
- birds
 - behaviour
 - colour of eyes and comb
 - mortality
 - sound
 - manure

- Functioning of drinking system
- Registering water consumption
- Check for vermin

Vermin control

Important in layer operations:

- egg rests
- feed rests
- manure

are feed for vermin:

- rats and mice
- flies
- bugs



Damage caused by vermin

Possible source of diseases

Feed consumers

Agitation

Rats and mice

- 1) Clean houses
- 2) Make a program for bait placement
- 3) Use different chemicals alternately
- 4) Check in remote parts of the house

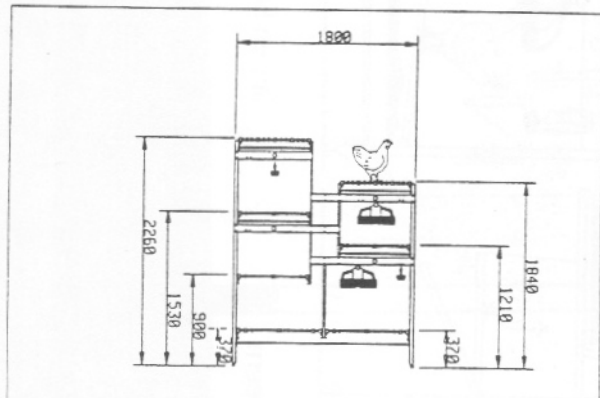
Other bugs

Red mite

Beetles

- not harmful for hens
- can transmit diseases

Alternative to floor: Aviary system




demonstratieproject
 welzijnsvriendelijke huisvestingsystemen
 Postbus 482, 6710 BL Ede, telefoon: 08380-71400, fax: 08380-24737

4

1 Scharreiruimte
 2 Legnesten
 3 Rustétage
 4 Zitstokken
 5 Voerinstallatie
 6 Drinknippels
 7 Mestbanden
 8 Aanvliegplateau

Rihs-Boleg 2
 Multiflooi
 Natura 280
 Étage
 Volétage

 Ministerie van Landbouw, Natuurbeheer en Visserij Postbus 482, 6710 BL Ede	© 1992 Copyright IKC - Veehouderij
	Informatie en Kennis Centrum Veehouderij
Naam: PLUIMVEESTAL	
Onderdeel: welzijnsvriendelijke huisvestingsystemen	
Afdeling: Pluimveehouderij	
Schaal: -	Datum: FEB 92 Blad: - Gew.: - Formaat: A3
Getekend: Marcel Rietveld	Archiefnummer: 92-3-05B

Thank you